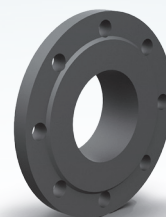
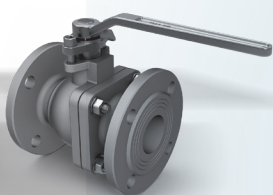
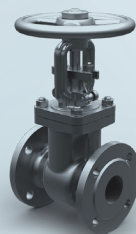
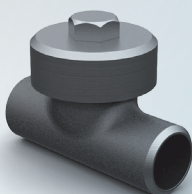
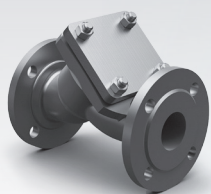


PROMARMATURA



PRIVATE JOINT STOCK COMPANY «PROMARMATURA»

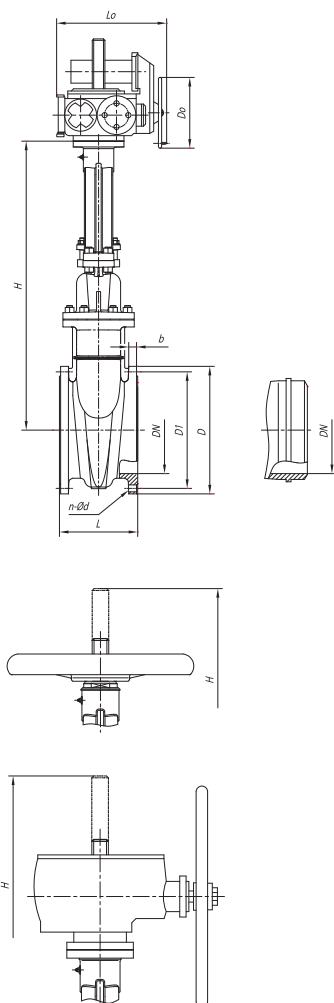
is a modern dynamically developing group of manufacturing plants and trading companies which for more than 20 years have been focused on production and complex deliveries of industrial pipe-line valves and oil and gas equipment for enterprises of iron and steel industry, chemical, oil and gas, energy, mining and ore-dressing and processing industries.

Powerful production base of holding's enterprises, own Special Design-Technological Bureau of industrial valve construction allow to produce wide range of pipe-line valves in big scale of diameters, pressures, temperatures and working media. Using capacities of foundry JSC «ARMAPROM», metallurgical complex «SPETSSTALL GOR Works Ltd.», forging capacities of PJSC «SLAVGOROD Fitting valves Plant», included in holding of JSC «PROMARMATURA», we are ready to offer the products from special, acid resistant, chrome and nickel, specially corrosion-resistant, heat-resistant, precision, low carbon steels and the so called steels of carbamide class - with specially low content of carbon (no more than 0,01%), nitrogen-alloyed steels and also high quality steels for nuclear industry (analogues of austenitic steels made by vacuum arc method). Using of innovation technologies of gas-oxygen refining of metal (GOR) allowed company «PROMARMATURA» to become one of world leaders in the field of special valves and to create pipe-line valves of new generation.

Many years of experience in realizing most difficult projects sometimes in cooperation with leading world manufacturers of pipe-line valves, biggest in CIS stock base for equipment and spare parts, possibility to ship the products by rail-way directly from production site in Dnepropetrovsk and in Belgorod city (Russia), representative offices in foreign countries – all that became the grounds for supplying tents of enterprises on turn-key basis.

The company certified the processes of design, elaboration, production, purchase, storage and delivery of pipe-line valves and equipment in accordance with the system of quality management ISO 9001.

GATE VALVES



WEDGE GATE VALVES WITH RISING STEM

Control type:

- manual (hand-wheel, gear box)
- electric actuator

Technical specification

PN 6,3 - 10

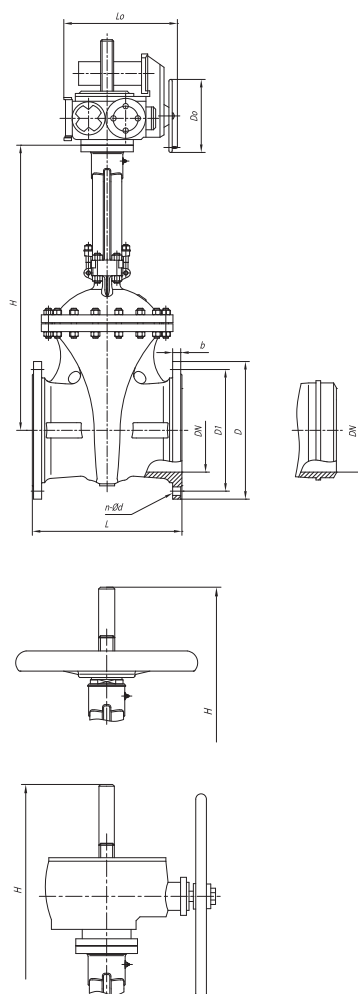
DN 150 - 600

- temperature : from -70 till +565°C

- connection type: flanged, weld

Body: carbon steel,
corrosion-resistant steel

Application: stop device on pipe-lines transporting water, steam, petroleum products, natural gas, liquid and gas aggressive media, neutral to the materials of parts in contact with working medium.



WEDGE GATE VALVES WITH RISING STEM

Control type:

- manual (hand-wheel, gear box)
- electric actuator

Technical specification

PN 10 - 160

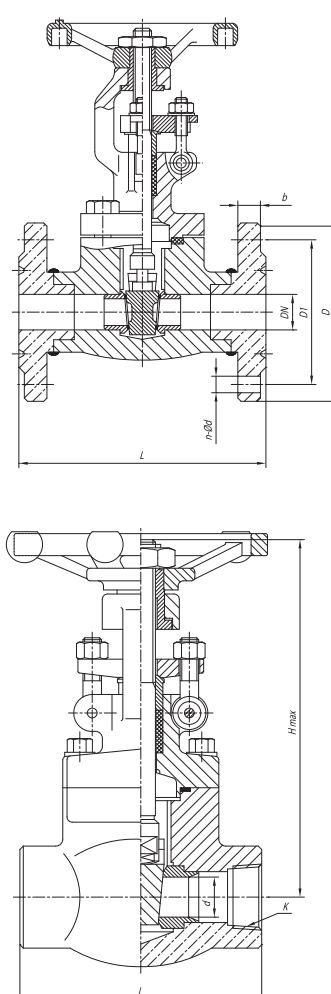
DN 50 - 1200

- temperature: from -70 till +565°C

- connection type: flanged, weld

Body: iron, carbon steel,
corrosion-resistant steel

Application: stop device on pipe-lines transporting water, steam, petroleum products, natural gas, liquid and gas aggressive media, neutral to the materials of parts in contact with working medium.



WEDGE GATE VALVES

Control type:

- manual

Technical specification

PN 160

DN 15 - 50

- temperature: from -40 till +450°C

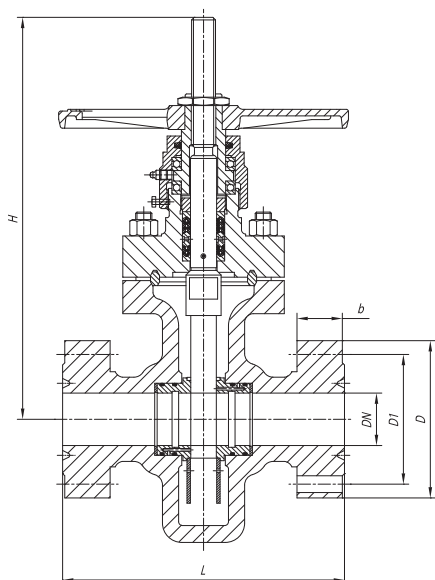
- connection type: flanged, thread

Body: carbon steel,
corrosion-resistant steel

Application: stop device on pipe-lines transporting water, steam, petroleum products, natural gas, liquid and gas aggressive media, neutral to the materials of parts in contact with working medium.

GATE VALVES

BUTTERFLY VALVE



Slab GATE VALVES WITH RISING STEM

Control type:

- manual (hand-wheel)

Technical specification

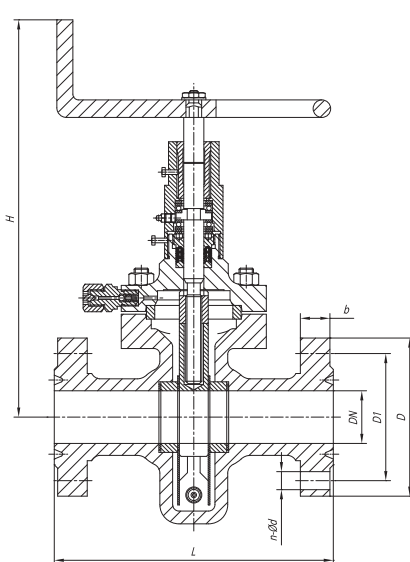
PN 210, 350

DN 65

- temperature: from -40 till +120°C
- connection type: flanged

Body: corrosion-resistant steel

Application: locking of wellhead valves on flow, injection and jack wells.



Slab GATE VALVES WITH NON-RISING STEM

Control type:

- manual (hand-wheel)

Technical specification

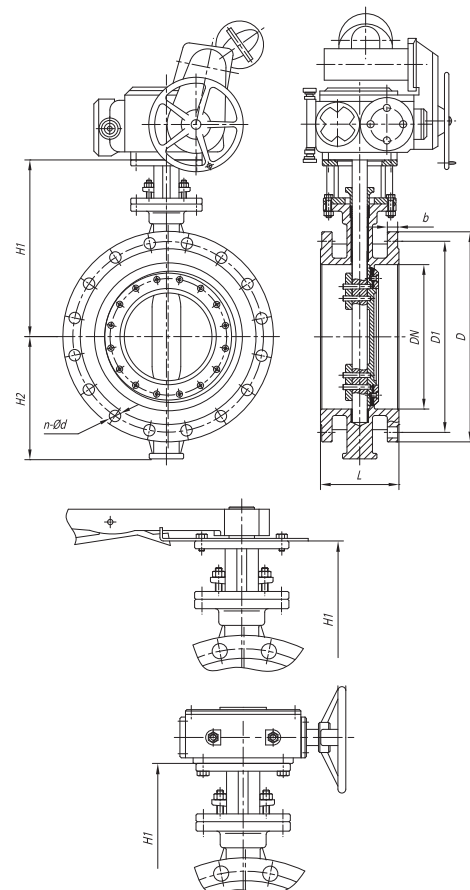
PN 210, 350

DN 65

- temperature: from -40 till +120°C
- connection type: flanged

Body: corrosion-resistant steel

Application: locking of wellhead valves on flow, injection and jack wells.



STEEL BUTTERFLY VALVES flanged

Control type:

- manual (hand-wheel, gear box)
- electric actuator

Technical specification

PN 10 - 40

DN 50 - 2000

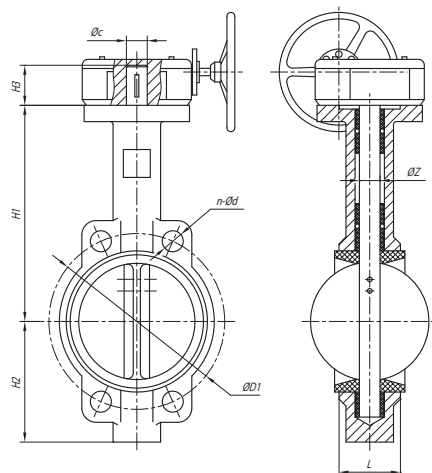
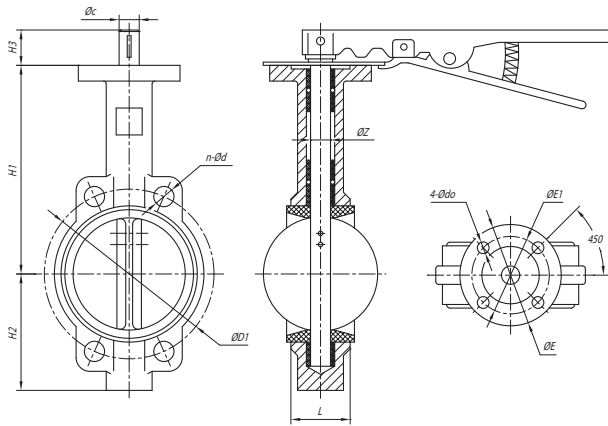
- temperature: from -70 till +538°C
- connection type: flanged

Body: carbon steel,
corrosion-resistant steel

Application: locking device on pipe-lines transporting water, steam, petroleum products, natural gas, liquid and gas aggressive media, neutral to the materials of parts in contact with working medium.

BUTTERFLY VALVE

BALL VALVES



IRON BUTTERFLY VALVES

Control type:

- manual (hand-wheel, gear box)
- electric actuator

Technical specification

PN 16

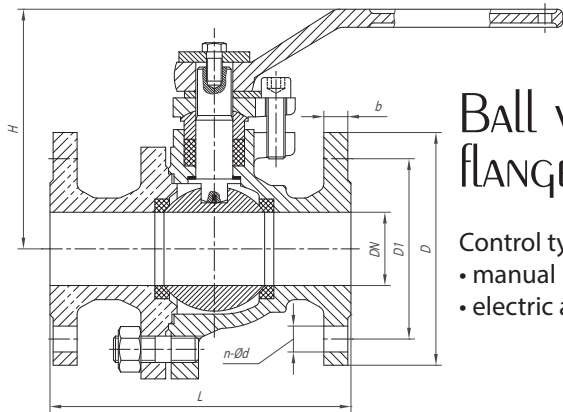
DN 50 - 600

- temperature: from -15 till +110 °C

- connection type: wafer

Body: iron

Application: stop-control device on pipe-lines transporting water, steam, petroleum products, natural gas, liquid and gas aggressive media, neutral to the materials of parts in contact with working medium.



Ball valves flanged

Control type:

- manual
- electric actuator

Technical specification

PN 16 - 40

DN 15 - 200

- temperature: from -60 till +150°C

- connection type: flanged

Body: carbon steel, corrosion-resistant steel

Application: stop device on pipe-lines transporting water, steam, petroleum products, natural gas, liquid and gas aggressive media, neutral to the materials of parts in contact with working medium.

Ball valves threaded

Control type:

- manual

Technical specification

PN 16 - 40

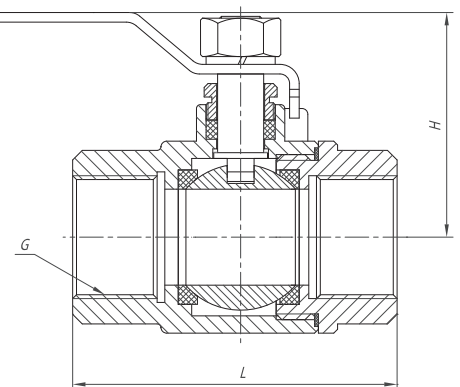
DN 15 - 50

- temperature: from -40 till +160°C

- connection type: thread

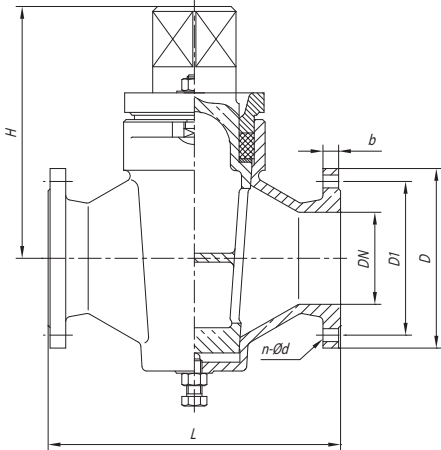
Body: carbon steel, corrosion-resistant steel

Application: stop device on pipe-lines transporting water, steam, petroleum products, natural gas, liquid and gas aggressive media, neutral to the materials of parts in contact with working medium.



PLUG VALVES

GLOBE VALVES



Plug valves

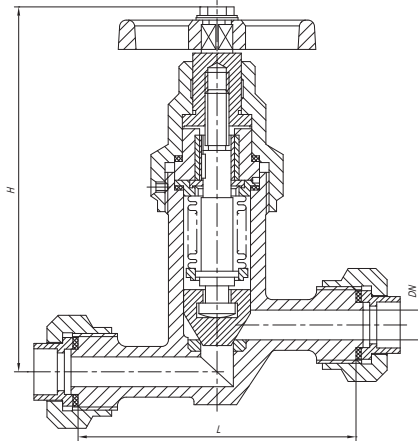
Control type:
• manual

Technical specification

PN 16
DN 50 - 200
- temperature: up to +100°C
- connection type: flanged

Body: iron

Application: pipe-lines for alkali media, technical water, oil, low aggressive pulp.



Bellow globe valve

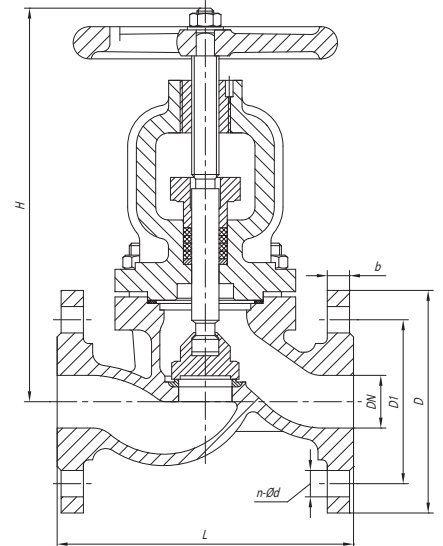
Control type:
• manual

Technical specification

PN 10
DN 15
- temperature: from -70 till +350°C
- connection type: threaded-end

Body: corrosion-resistant steel

Application: stop device on pipe-lines and equipment of enterprises in different fields of industry.



Globe valves

Control type:
• manual
• electric actuator

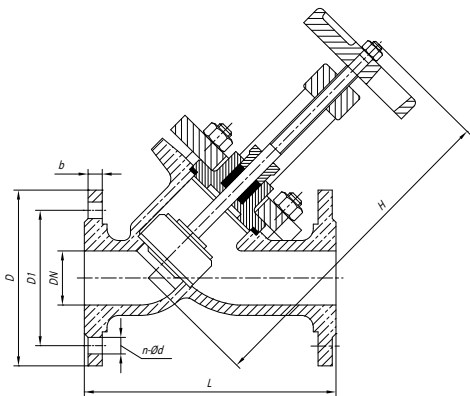
Technical specification

PN 16 - 160
DN 6 - 200
- temperature: from -70 till +600°C
- connection type: flanged, threaded, weld

Body: carbon steel, corrosion-resistant steel

Application: stop device on pipe-lines and equipment of enterprises in different fields of industry.

GLOBE VALVES



Y-TYPE GLOBE VALVES

Control type:
• manual

Technical specification

PN 10, 16

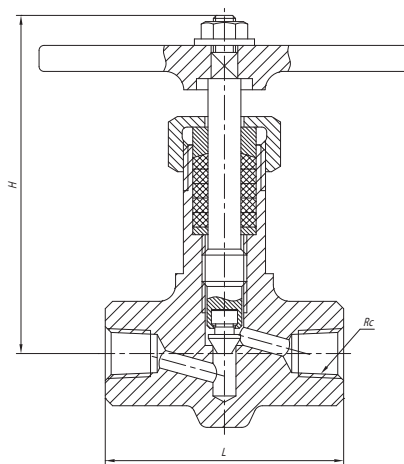
DN 25 - 300

- temperature: from -200 till +180°C

- connection type: flanged

Body: titanium alloy TH-3

Application: stop device on pipe-lines and equipment of enterprises in different fields of industry.



NEEDLE VALVES

Control type:
• manual

Technical specification

PN 160

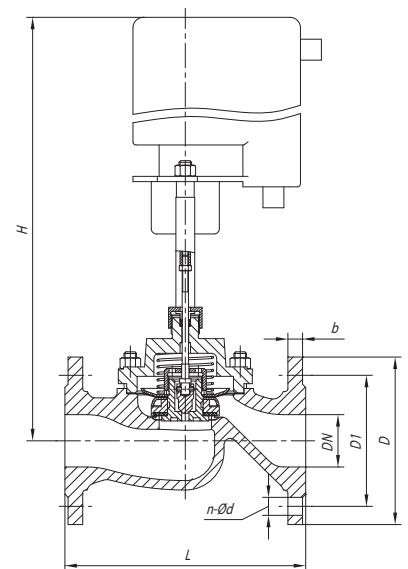
DN 6 - 25

- temperature: from -40 till +420°C

- connection type: thread

Body: carbon steel,
corrosion-resistant steel

Application: stop device on pipe-lines and equipment of enterprises in different fields of industry.



SOLENOID VALVES

Control type:
• electromagnet

Technical specification

PN 16

DN 25 - 65

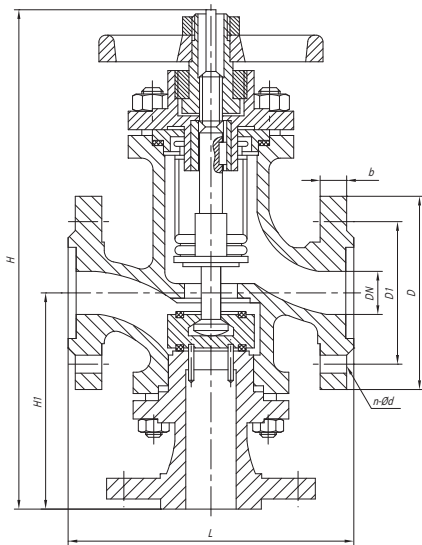
- temperature: from -30 till +150°C

- connection type: flanged

Body: carbon steel,
corrosion-resistant steel

Application: stop device on pipe-lines and equipment of enterprises in different fields of industry.

GLOBE VALVES



3-way bellow globe valves

Control type:

- manual

Technical specification

Pp 25

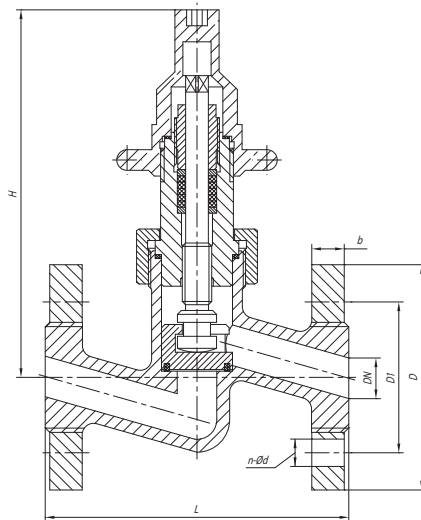
DN 20 - 100

- temperature: from -40 till +200°C

- connection type: flanged

Body: carbon steel,
corrosion-resistant steel

Application: stop device on
pipe-lines and equipment of
enterprises in different fields of
industry.



Globe valves

Control type:

- manual

Technical specification

PN 25

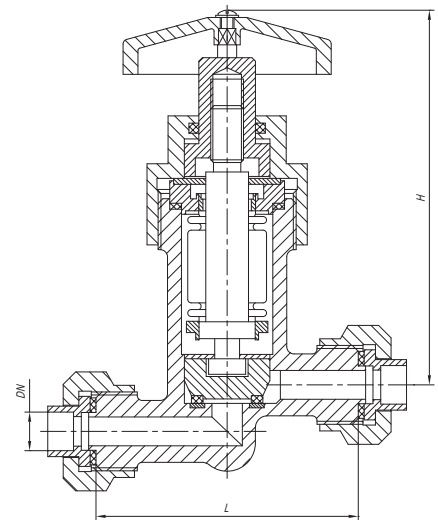
DN 6 - 32

- temperature: from -100 till +150°C

- connection type: flanged, nipple

Body: carbon steel, corrosion-resistant
steel

Application: stop device on pipe-lines
transporting Freon, ammonia, and
other liquid and gas media, neutral to
the materials of parts in contact with
working medium.



Bellow globe valves

Control type:

- manual

Technical specification

PN 25

DN 10 - 15

- temperature: from -100 till +150°C

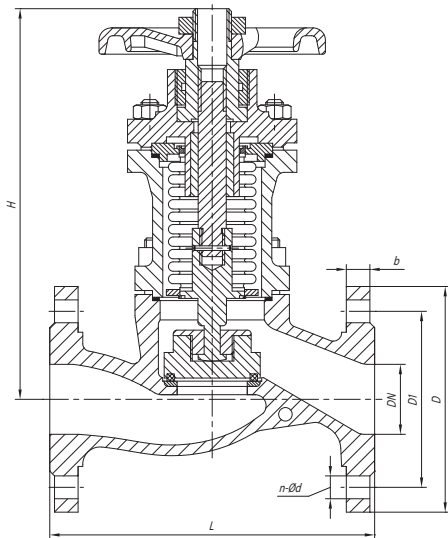
- connection type: nipple

Body: 09Г2С, corrosion-resistant
steel

Application: stop device on
pipe-lines transporting Freon,
ammonia, and other liquid and gas
media, neutral to the materials of
parts in contact with working
medium.

GLOBE VALVES

SHUT-OFF VALVES



Bellow globe VALVES

Control type:
• manual

Technical specification

PN 40

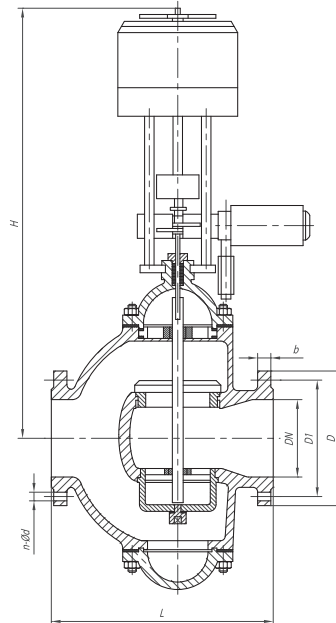
DN 32 - 150

- temperature: from -30 till +180°C

- connection type: flanged

Body: carbon steel,
corrosion-resistant steel

Application: stop device on
pipe-lines and equipment of
enterprises in different fields of
industry.



SHUT-off VALVES WITH ELECTRIC ACTUATOR

Control type:
• electric actuator

Technical specification

PN 0,5 - 1,0

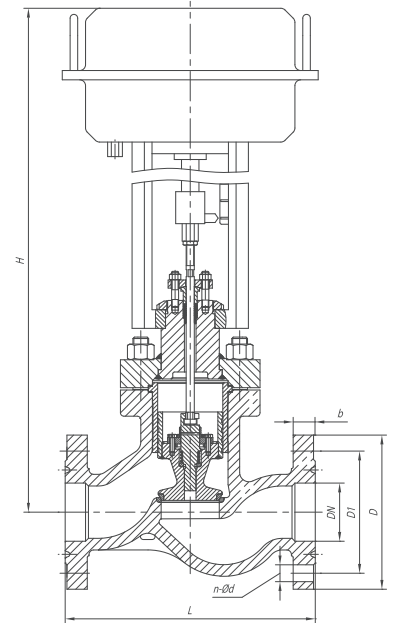
DN 50 - 350

- temperature: from -40 till +150°C

- connection type: flanged

Body: carbon steel, corrosion-resistant
steel

Application: for quick shut-off of
medium flow on pipe-lines of natural
gas, coke oven gas, blast-furnace gas
and other low aggressive media.



SHUT-off VALVES WITH PNEUMATIC diaphragm ACTUATOR

Control type:
• pneumatic diaphragm actuator

Technical specification

PN 10, 40, 100

DN 20 - 350

- temperature: from -100 till +450°C

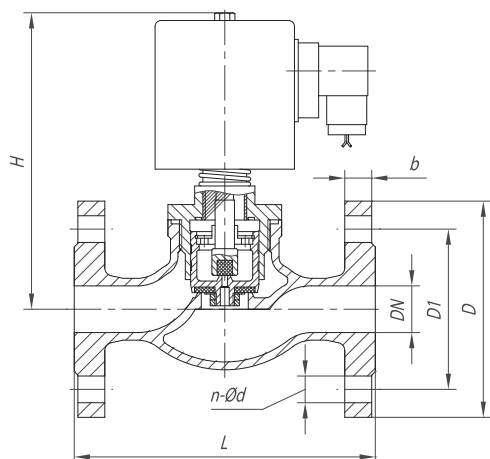
- connection type: flanged

Body: carbon steel,
corrosion-resistant steel

Application: for quick shut-off of
medium flow on pipe-lines and
equipment of enterprises in different
fields of industry.

SHUT-OFF VALVES

CHECK VALVES SWING CHECK VALVES



SHUT-OFF VALVES WITH ELECTROMAGNET

Control type:
• electromagnet

Technical specification

PN 16

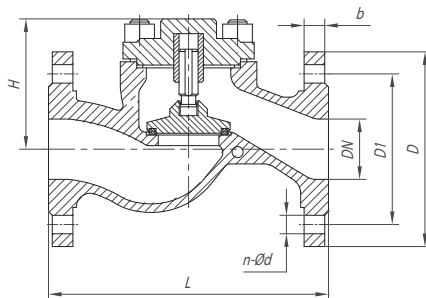
DN 10 - 250

- temperature: from -30 till +400°C

- connection type: flanged

Body: carbon steel,
corrosion-resistant steel

Application: for quick shut-off of
medium flow on pipe-lines and
equipment of enterprises in different
fields of industry.



CHECK VALVES

Control type:
• by medium flow

Technical specification

PN 16, 40

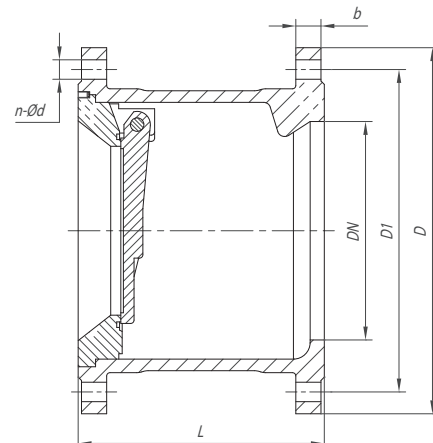
DN 32 - 200

- temperature: from -70 до +560°C

- connection type: flanged, weld

Body: carbon steel, corrosion-resistant
steel

Application: to be installed on
pipe-lines as device automatically
preventing reversed flow of medium.



SWING CHECK VALVES FLANGED

Control type:
• by medium flow

Technical specification

PN 16

DN 25 - 250

- temperature: from -70 till +560°C

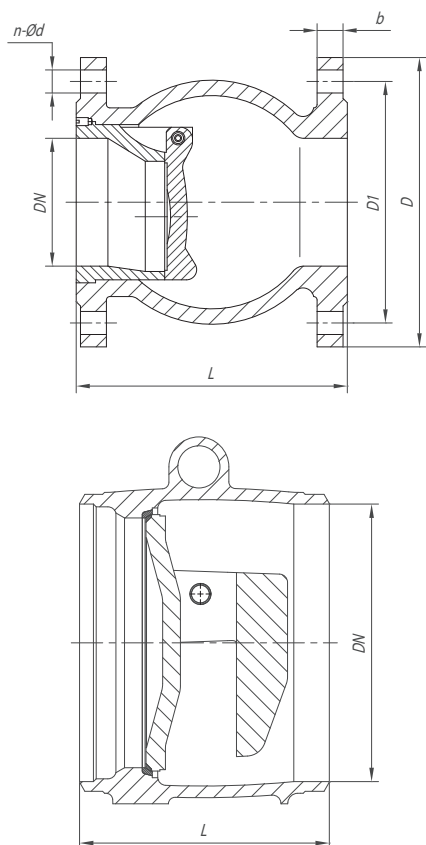
- connection type: flanged

Body: carbon steel,
corrosion-resistant steel

Application: to be installed on
pipe-lines as device automatically
preventing reversed flow of medium.

CHECK VALVES

SWING CHECK VALVES



SWING CHECK VALVES

Control type:

- by medium flow

Technical specification

PN 25, 40

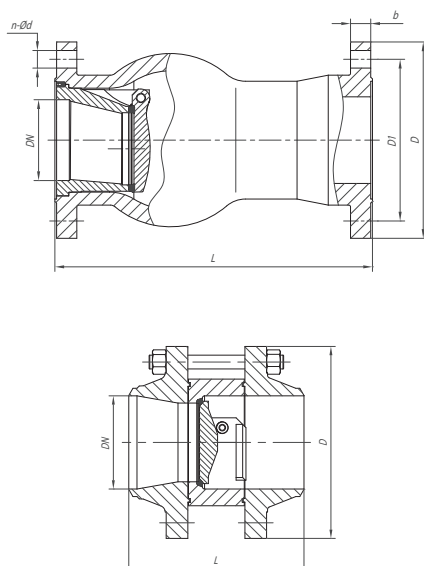
DN 25 - 1000

- temperature: from -70 till +560°C

- connection type: flanged, weld

Body: carbon steel,
corrosion-resistant steel

Application: to be installed on
pipe-lines as device automatically
preventing reversed flow of medium.



SWING CHECK VALVES

Control type:

- by medium flow

Technical specification

PN 63, 100, 160

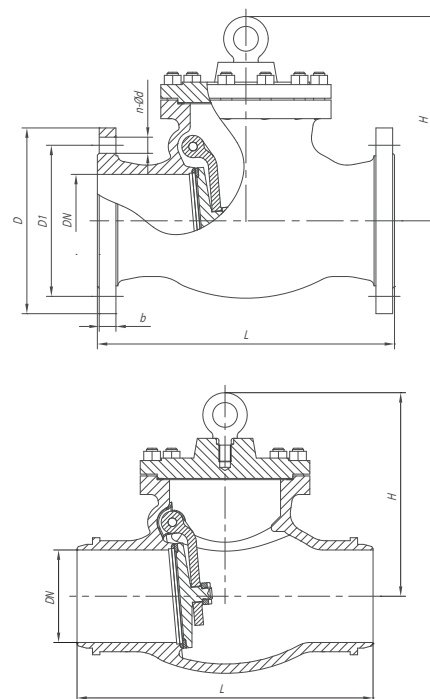
DN 50 - 300

- temperature: from -70 till +560°C

- connection type: flanged, weld

Body: carbon steel,
corrosion-resistant steel

Application: to be installed on
pipe-lines as device automatically
preventing reversed flow of medium.



SWING CHECK VALVES

Control type:

- by medium flow

Technical specification

PN 16, 25, 40

DN 50 - 200

- temperature: from -70 till +560°C

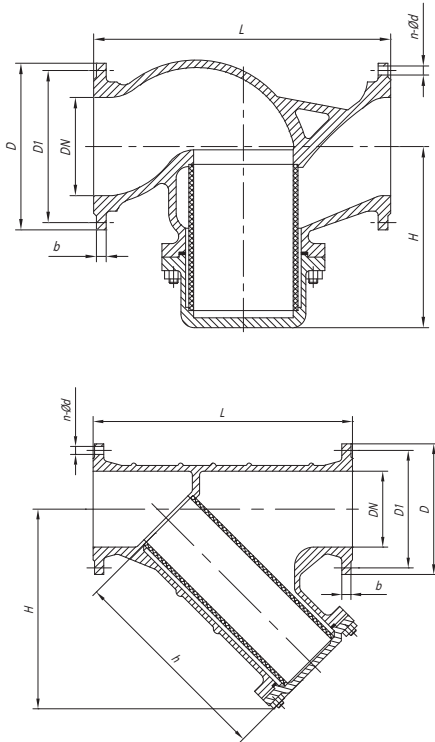
- connection type: flanged, weld

Body: carbon steel,
corrosion-resistant steel

Application: to be installed on
pipe-lines as device automatically
preventing reversed flow of medium.

STRAINERS

STEAM TRAPS



STRAINERS

Technical specification

PN 10 - 160

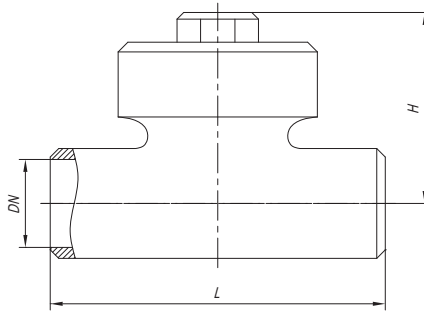
DN 20 - 800

- temperature: from -70 до +220°C

- connection type: flanged

Body: carbon steel,
corrosion-resistant steel

Application: filtering mechanical impurities out of working medium on pipe-lines and equipment of enterprises in different fields of industry.



THERMODYNAMIC STEAM TRAPS

Technical specification

PN 40

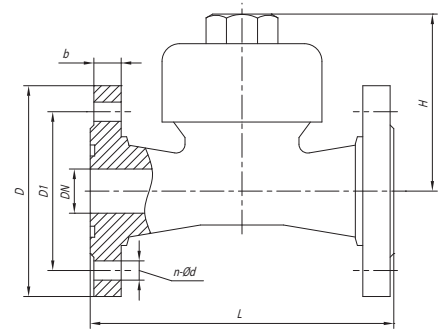
DN 10 - 50

- temperature: up to +300°C

- connection type: weld

Body: carbon steel, corrosion-resistant steel

Application: automatic condensation drainage from steam pipe-lines and steam receivers.



THERMODYNAMIC STEAM TRAPS

Technical specification

PN 100

DN 25, 50

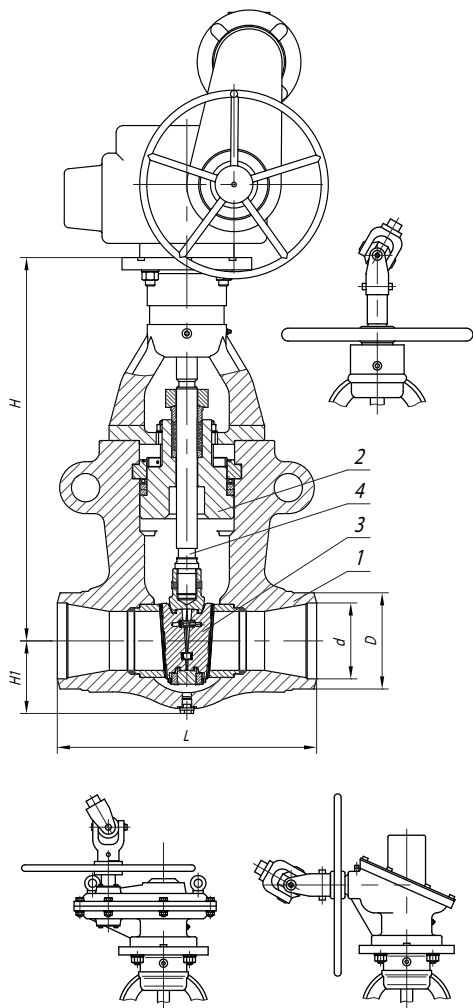
- temperature: up to +300°C

- connection type: flanged

Body: carbon steel

Application: automatic condensation drainage from steam pipe-lines and steam receivers.

VALVES FOR POWER STATIONS



GATE VALVES

Control type:

- manual
- electric actuator

Technical specification

Pp 100, 140, 240, 255, 380

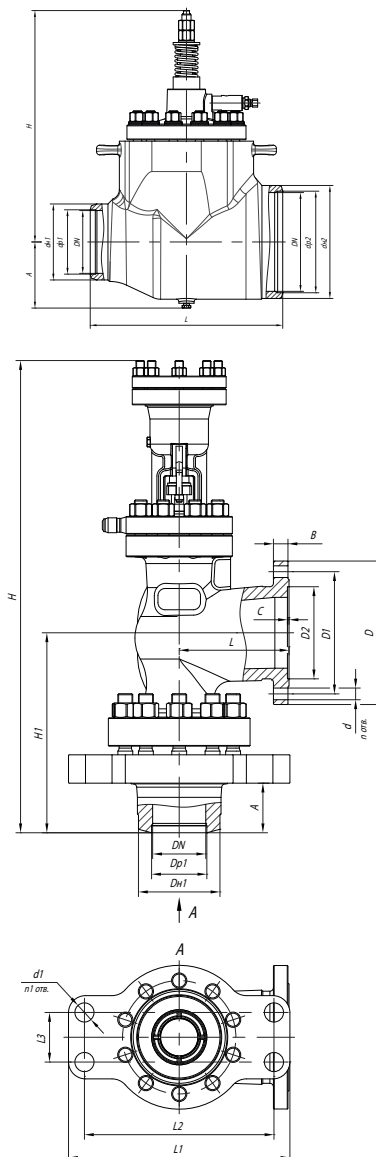
DN 80 - 300

- temperature: +570°C

- connection type: weld

Body: carbon steel, corrosion-resistant steel, 15ГC, 20ГCЛ

Application: to stop medium flow on technological pipe-lines of steam and hot water on power stations and power plants of high parameters.



SAFETY VALVES

Control type:

- servo actuator

Technical specification

Pp 8-12; 13-44; 41; 100; 140; 255

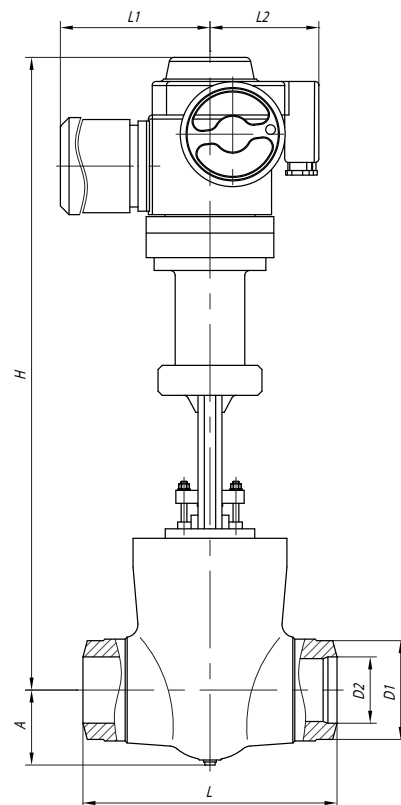
DN 125/250; 150/200; 250/400

- temperature: +570°C

- connection type: weld

Body: steel 20ГCЛ, 15X1M1ΦЛ

Application: guarantee of safe work of boiler units, high pressure vessels and systems, preventing pressure to exceed allowed values.



CONTROL VALVE

Control type:

- electric actuator

Technical specification

PN 140

DN 150

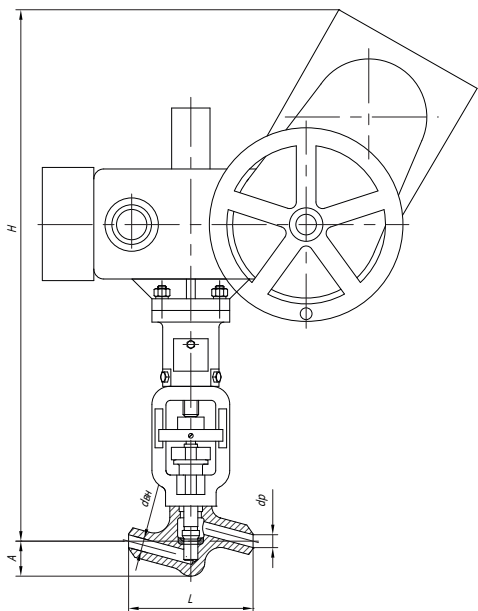
- temperature: +560°C

- connection type: weld

Body: carbon steel, corrosion-resistant steel

Application: as control device on technological pipe-lines of steam and hot water on power stations and power plants of high parameters.

VALVES FOR POWER STATIONS



GLOBE VALVES

Control type:

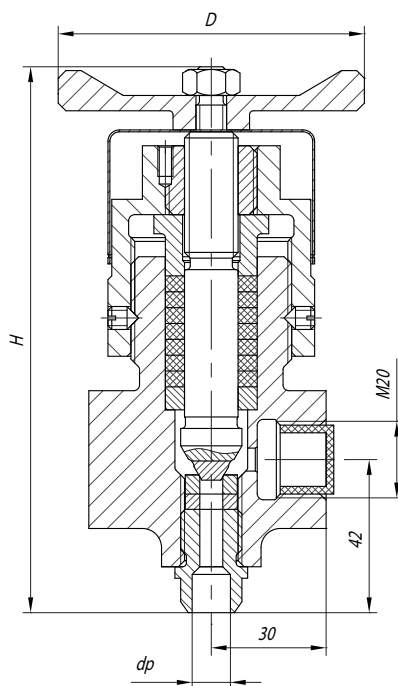
- manual
- electric actuator

Technical specification
Pp 98, 137, 235, 250, 373
DN 10 - 65

- temperature: +560°C
- connection type: weld

Body: carbon steel,
corrosion-resistant steel

Application: to stop medium flow on technological pipe-lines of steam and hot water on power stations and power plants of high parameters.



GLOBE VALVES

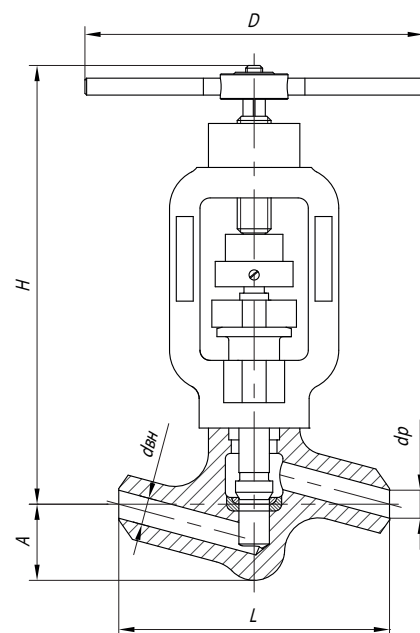
Control type:

- manual

Technical specification
PN 100 DN 6
Pp 137 DN 10
- temperature: +560°C
- connection type: thread, weld

Body: carbon steel, corrosion-resistant steel

Application: to stop medium flow on technological pipe-lines of steam and hot water on power stations and power plants of high parameters.



CONTROL VALVES

Control type:

- manual

Technical specification
Pp 98, 235, 250, 373
DN 10, 20, 65
- temperature: +545°C
- connection type: weld

Body: carbon steel,
corrosion-resistant steel

Application: as control device on technological pipe-lines of steam and hot water on power stations and power plants of high parameters.

+38 (0562) 35-66-64
ФАКС +38 (0562) 35-66-32
E-mail: SALES@PROMARMATURA.UA

WWW.PROMARMATURA.UA



PROM
ARMATURA